

# Can I Make My Car Drive Across the City?

## 1. Choose Background



New Background



OK



## 2. Choose Character



New Character



OK



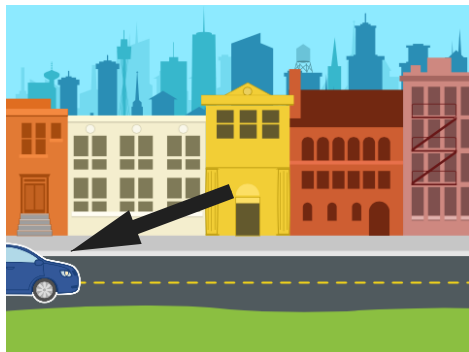
Delete the cat (press and hold)

## 3. Resize Character and Move to Start Place



4

Shrink

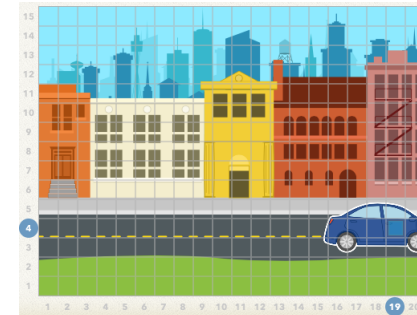


Drag the car from the center of the screen to the bottom corner.

## 4. Make Programs



Grid On/Off



Use the grid to calculate how many blocks the car should move.



- How would you make the car go only half way across the screen?

- What would happen if a wizard, or a dragon, or an elephant appeared on the sidewalk?